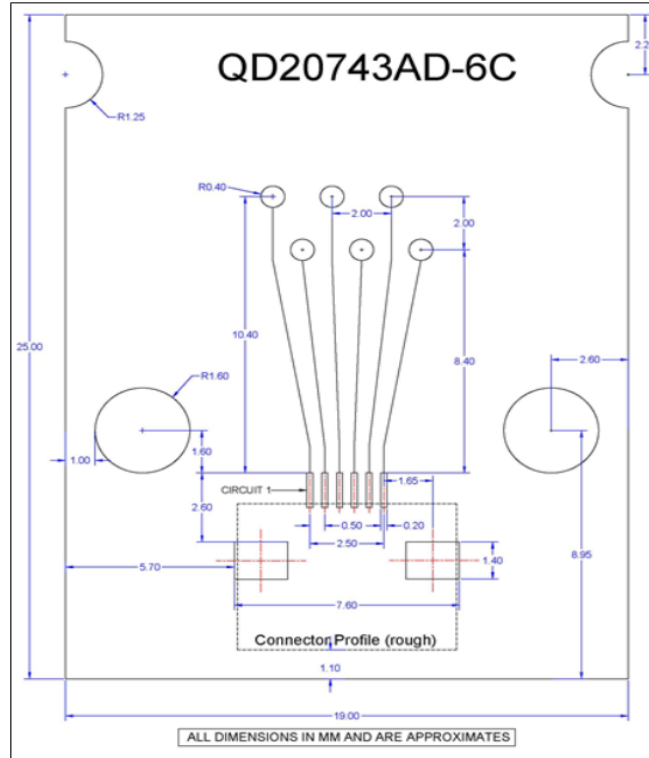
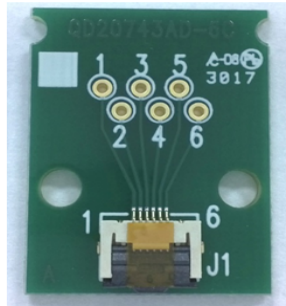


CN1	THROUGH HOLE
1	1
2	2
3	3
4	4
5	5
6	6

THIS BOARD ACCEPTS 6 POSITION 0.50MM FFC/FPC AND TRANSITIONS TO SOLDER HOLES FOR DISCRETE WIRE

CN1 = FPC4AMR8C-6GMR-U



DWG BY: RK	DATE: 1/16/17	DRAWINGS ARE NOT TO SCALE. ALL DIMENSIONS ARE IN INCHES UNLESS OTHERWISE SPECIFIED. ALL TOLERANCES ARE +/- 0.50" UNLESS OTHERWISE SPECIFIED
CHK BY:	DATE: 1/16/17	
APPR: -	DATE: 1/16/17	

REVISION HISTORY			
REV		DATE	APPROVED
---	Initial Release	1/16/17	RK
---	Drawing Update	10/23/17	PT



Quadrangle Products Inc.

Quadrangle Products Inc.
28 Harrison Ave Suite 105,
Englishtown, NJ 07726

Tel: 732-792-1234
Fax: 732-792-8305

© Copyright 2006 Quadrangle Products Inc.
This document is confidential and proprietary to Quadrangle Products Inc. and shall not be reproduced, copied, used, or issued as the basis of manufacturing and/or sale of equipment, material, or any other item. Quadrangle Products Inc. has the sole and exclusive ownership rights to this document and information contained herein.

QD20743AD-6C